

ABOUT JAM BASE



CONCEPT

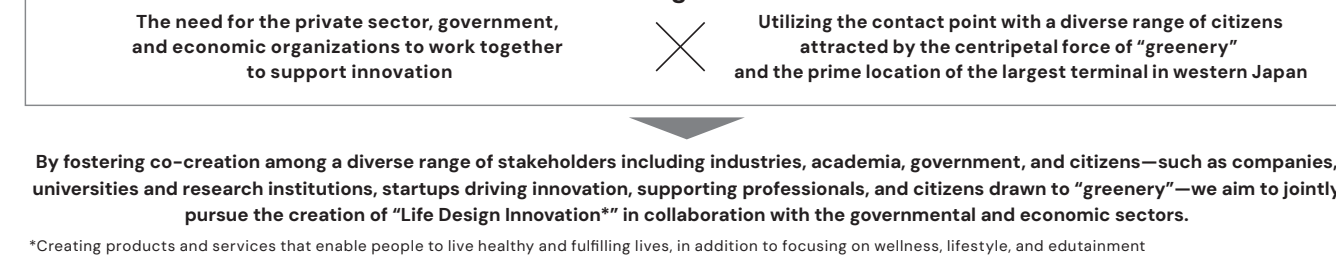
“Vividly Intertwined, Harmoniously Mixed”

“JAM BASE” is the core functional facility of GRAND GREEN OSAKA, where diverse individuals gather and interact to generate innovative ideas. We support enthusiastic players such as companies, universities, research institutes, startups, and venture capital firms in working together to shape new ideas and take on the challenges of social implementation and commercialization. We aim to become a hub for innovation activities, with the private sector, government, and economic organizations working together to promote and support a variety of activities.

What are core functions?



Background



FACILITIES JAM BASE – Main Location

Located on the 1st to 9th floors of the North Tower of GRAND GREEN OSAKA, adjacent to Umekita Park, this is the main hub of JAM BASE, a collection of facilities central to innovation activities, including a members-only social space, a co-working space, and offices.

JAM-STUDIO

92 rental offices with a wide variety of spaces

JAM-STUDIO is a rental office with a wide range of spaces, from approximately 26m² to 70m². Each space is equipped with desks, chairs, storage shelves, telephone, and internet access, which are available for use from the day you move in.

*A fixed-term building lease contract and a Syn-SALON contract are required in order to use these facilities.



JAM-DESK

Co-working spaces that can be registered

JAM-DESK is a co-working space with free address seating that can be rented for as little as one seat by both corporations and individuals*. You can register your company and use the address. You can also use Syn-SALON within JAM BASE.

*Users must register by name.

Syn-SALON

A members-only exchange space aiming to co-create new value

Syn-SALON is a members-only exchange space with a four-story atrium facing Umekita Park, with the aim of creating new value together. Contracts are available to both corporations and individuals*.

*Users must register by name.



Shared Lounge

Abundant shared spaces designed to foster seamless “interaction” across boundaries

The rental office JAM-STUDIO, co-working space JAM-DESK, and members-only social space Syn-SALON all have a variety of open and shared spaces that can be used for wide-ranging events as additional facilities. In each area, boundaries are transcended, fostering “interaction” and facilitating diverse conversations. Expect the emergence of ideas unlike any seen before.



Meeting Room

Bar Counter

Kitchen

Rooftop Garden



CONFERENCE

Rental CONFERENCE available for small groups of up to 285 people

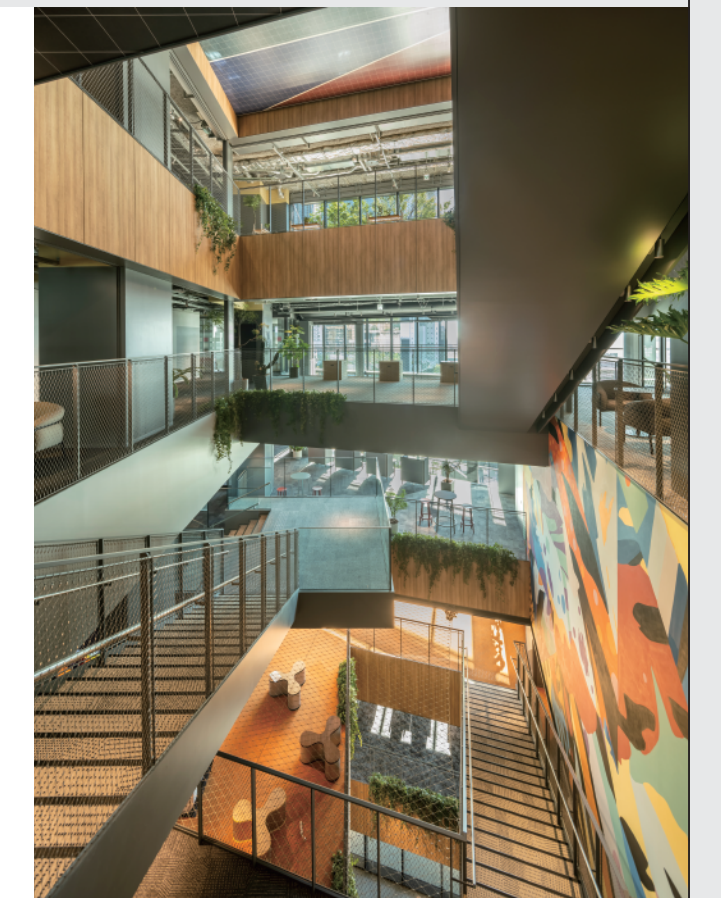
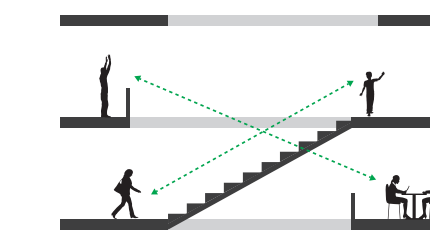
We offer rental CONFERENCE that can accommodate various group sizes, from small meetings of up to 12 people to large events with up to 285 people. Available for use by non-members and non-tenants as well.

An atrium connecting the upper and lower floors, designed to spark spontaneous encounters

To embody the concept of “Vividly Intertwined, Harmoniously Mixed,” we focus on the following three key aspects in creating our facilities.

- 1 Taking advantage of the integrated development with Umekita Park, adjacent to JR Osaka Station, the largest terminal station in western Japan, the facility is arranged so that as many wide-ranging people as possible can interact with each other
- 2 An atrium connects the upper and lower floors, creating a space that allows for a visual sense of each activity and a feeling of unity and connection
- 3 The facility itself will become a device for generating innovation, with mechanisms* placed throughout the facility that encourage spontaneous encounters and provide inspiration
*Bar counter, kitchen, grand staircase, art, etc.

Intersection of lines of sight and pathways



NAMING JAM MING + BASE

“JAMMING” is the word for musical improvisation, and we hope that the unique co-creation that takes place at “JAM BASE” will be as fun and exciting as making music. We also hope that “BASE” will become a kind of home base for those who work in and visit the area—a familiar place that people, both global and local, can visit again and again and return to whenever they like.

LOGO



The dynamic identity (a flexible logo visual) captures how JAM BASE evolves and transforms alongside the diverse individuals who gather at the facility. This is a new type of logo design that allows the configuration of its elements to be freely modified depending on the context or medium in which it is used.

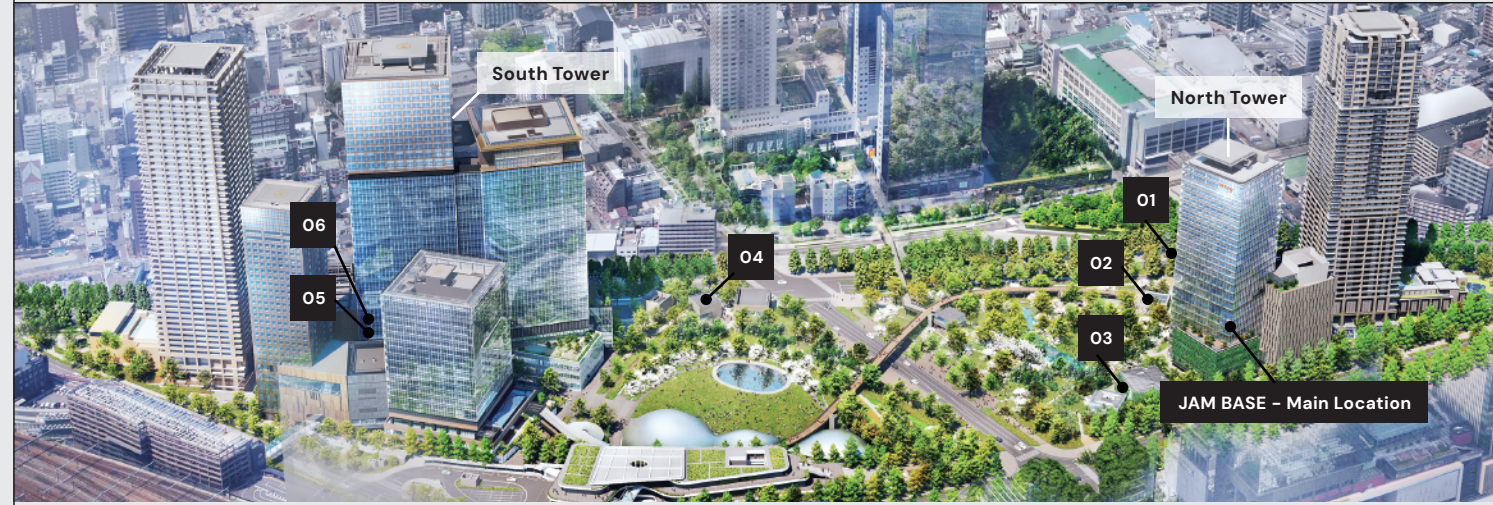
Logo Video



FACILITIES

JAM BASE Facilities

JAM BASE facilities are scattered throughout the city.



01 Next-generation experience-based learning facility

BørneLund PLAY CUBE
A new inquiry-based learning space where people of all ages can experience "learning" through play, participating in a variety of programs and meeting professionals from various fields.



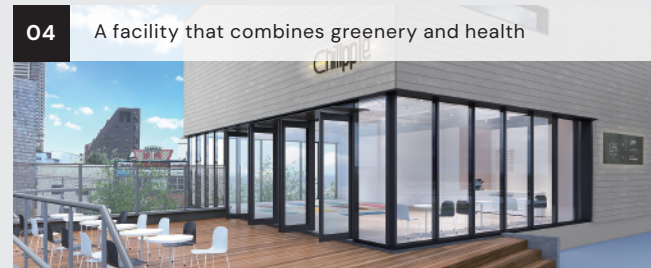
02 A multi-purpose facility surrounded by greenery

MULTI SPACE
Within Umekita Park, there is a multi-purpose space that can be used for various corporate activities. The facility can accommodate up to 75 people and host a variety of programs, including workshops and demonstration experiments conducted amidst greenery.



03 A cultural experience facility

VS.
A new cultural experience facility featuring unique architectural spaces, including an exhibition studio with a 15-meter-high ceiling, hosting international exhibitions, events, and innovation projects.



04 A facility that combines greenery and health

Fit cube
Offering a broad approach to health, the facility provides services such as a runner's station to support runners and walkers, a multi-purpose space and café for sharing health-related information, and a place for rest and relaxation to promote mental wellbeing and healing.



05 A MICE Facility

Congrès Square GRAND GREEN OSAKA
An urban MICE facility with a large hall of approximately 750m², a small hall of approximately 450m², and 12 meeting rooms of various sizes. It can accommodate a variety of occasions, from relaxed meetings to innovative events and international conferences where people and knowledge come together.

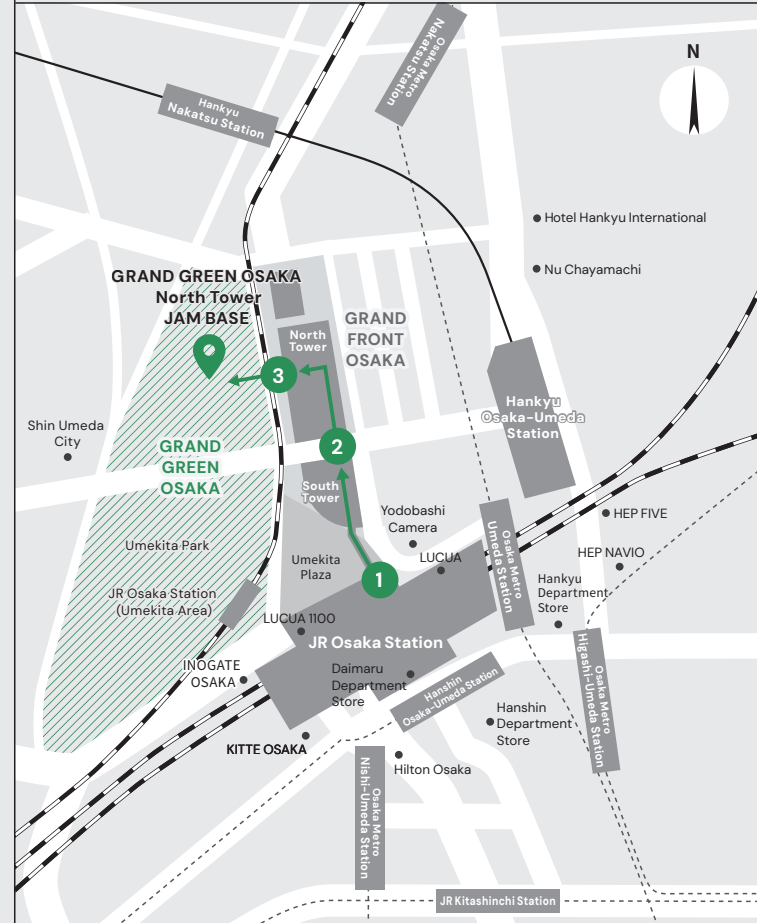


06 A health support facility for office workers

SLOW AND STEADY
A living lab designed to improve the physical and mental wellbeing of workers and contribute to raising health awareness. We support healthy daily lives through data collection using measuring equipment and community events.

ACCESS

The main location of JAM BASE is located in the North Tower of GRAND GREEN OSAKA, about a 7-minute walk from the JR Osaka Station.



Access from JR Osaka Station (via GRAND FRONT OSAKA)

- 1 From the 2nd floor JR Osaka Station North Central Gate Atrium Plaza, cross the connecting deck to GRAND FRONT OSAKA
 - 2 From the 2nd floor of GRAND FRONT OSAKA South Building, go through the North Building
 - 3 From the 2nd floor of GRAND FRONT OSAKA North Building, go through the GRAND GREEN OSAKA North Connecting Bridge
- GRAND GREEN OSAKA North Tower

Travel time from each station

- Approx. 7 minutes' walk from JR Osaka Station
- Approx. 8 minutes' walk from Umeda Station on the Osaka Metro Midosuji Line
- Approx. 7 minutes' walk from Hankyu Osaka-Umeda Station
- Approx. 10 minutes' walk from Hanshin Osaka-Umeda Station



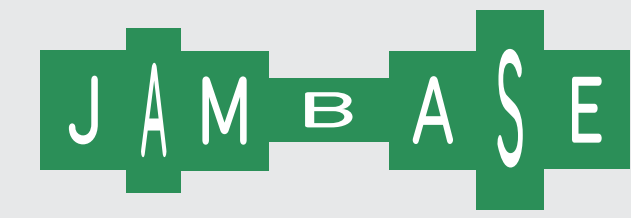
GRAND GREEN OSAKA



GRAND GREEN OSAKA, which opened in the Umekita Phase 2 Development Area, is filled with abundant greenery that warmly embraces everyone. "Encounters within the community create diverse values, continuously improving both individuals and society as a whole." This is the type of urban development that GRAND GREEN OSAKA aims to achieve. The "Green" in the name symbolizes not only the theme of "the fusion of nature and the city" centered around the park, but also embodies the aspiration for diverse individuals to gather, connect, and embrace each other's uniqueness, unlocking countless possibilities. The more time spent here, the more it opens up new worlds to explore. We provide spaces and systems where the public, visitors, and organizations such as companies and research institutions that share our vision can take on challenges and thrive. By collaborating with these individuals and organizations to advance various initiatives within this community, we aim to co-create new values, such as improving people's quality of life, creating opportunities for self-fulfillment, supporting sustainable corporate activities, and fostering innovation.



Official Site <https://umekita.com/jambase/>
6-38 Ofukacho, Kita-ku, Osaka 530-0011
Co-Creation Generator (CCG)



JAM BASE is an innovation platform in GRAND GREEN OSAKA.

